

Open Space and Parks Category



Open Space and Parks Category

Applications for public recreational and open space projects will be evaluated based on the following criteria...

1. Provides **public access to state waters** offering recreational opportunities:

- Boating
- Fishing
- Swimming
- Viewing



Max: 10 points

2. Provides **public access** for **Land-Based Recreation**:

- Natural Areas
- Developed Parks
- Trails



Max: 10 points

Virginia Outdoors Plan 2024 –

Virginia's 12th statewide
comprehensive outdoor
recreation plan

- VA's official Outdoor Recreation and Land Conservation plan
- Produced every 5 years
- ESRI web-based platform
- Includes Regional priorities



3. VOP Outdoor Recreation Priorities

<https://www.dcr.virginia.gov/recreational-planning/vop>

Addresses a need identified in the Virginia Outdoors Plan (specify the VOP section #)

Scoring is additive:

- Access to historic areas
- Opportunities to view wildlife
- Conservation of significant habitats or natural communities
- Dark sky conservation
- Plans for recreational support amenities



Max:
10 points



4. Project Location and Recreational Expansion

- Creates a new outdoor recreational opportunity or
- Expands existing parks and/or public conservation areas with a focus on recreational interests.

Max: 10 points

5. Scenic Resources

Protects scenic viewsheds or land important to the protection of designated **scenic resources**:

- Federally designated Wild and Scenic Rivers
- American Heritage Rivers
- Virginia's Scenic Rivers
- Scenic Roads and Virginia Byways
- Statewide connecting trails,
- Greenways or blueways
- Existing trails and recreation areas
- Public transit routes



Max: 10 points



**See VOP Mapper
(next slide)**

6. Aligns with local or regional plans

- for parks, open space, and recreational facilities
- contributes to protection of an identified conservation corridor

(Name and page number of plan must be cited)



Max:
15 points

7. Public Access

Availability of land for
public access and ways to
access site



Max:
10 points

8. Recreation Need

I. Land-based (10 pts) Identified Need:

A. DCR Nature-Based Recreation Access Model

OR

B. ParkServe Park Need

*Score will be the higher of the two if data is available on both models for the project location

II. Water-based (5 pts) Identified Need:

A. DCR Nature-Based Recreation Access Model

*can provide other supporting evidence, please cite source

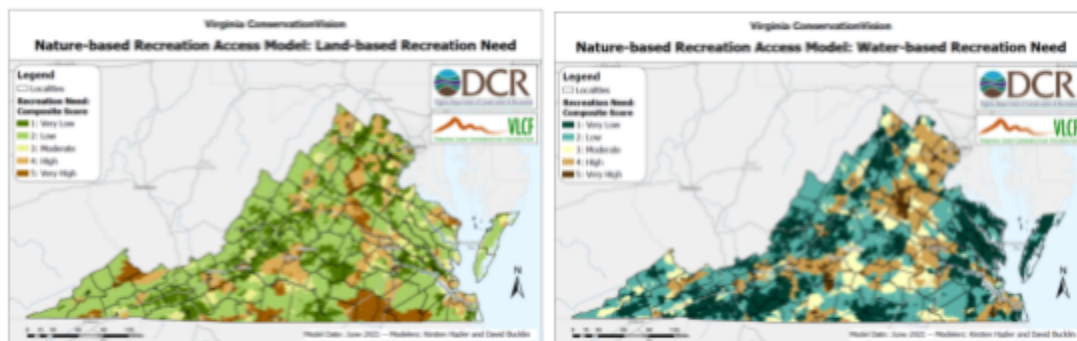
Max: 15 points



[ConservationVision](#) | [Agriculture](#) | [Cultural Resources](#) | [Development Vulnerability](#) | [Forest Conservation](#) | [Natural Landscapes](#) | [Potential Rare Species Richness](#) | [Recreation Access](#) | [Watersheds](#)

Nature-based Recreation Access Model (2021 version)

Model last updated 6/2021.



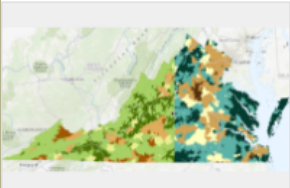
Details

A technical report is in progress and will be available on this page soon. Additional model information materials include:

- A [slide deck](#) (PDF) giving an overview of the model
- [Frequently asked questions](#)
- A recording of an informational [webinar](#) held on April 27, 2021

Online Mapping

An interactive web map is available [here](#). The composite score layers will soon also be available on Natural Heritage Data Explorer.



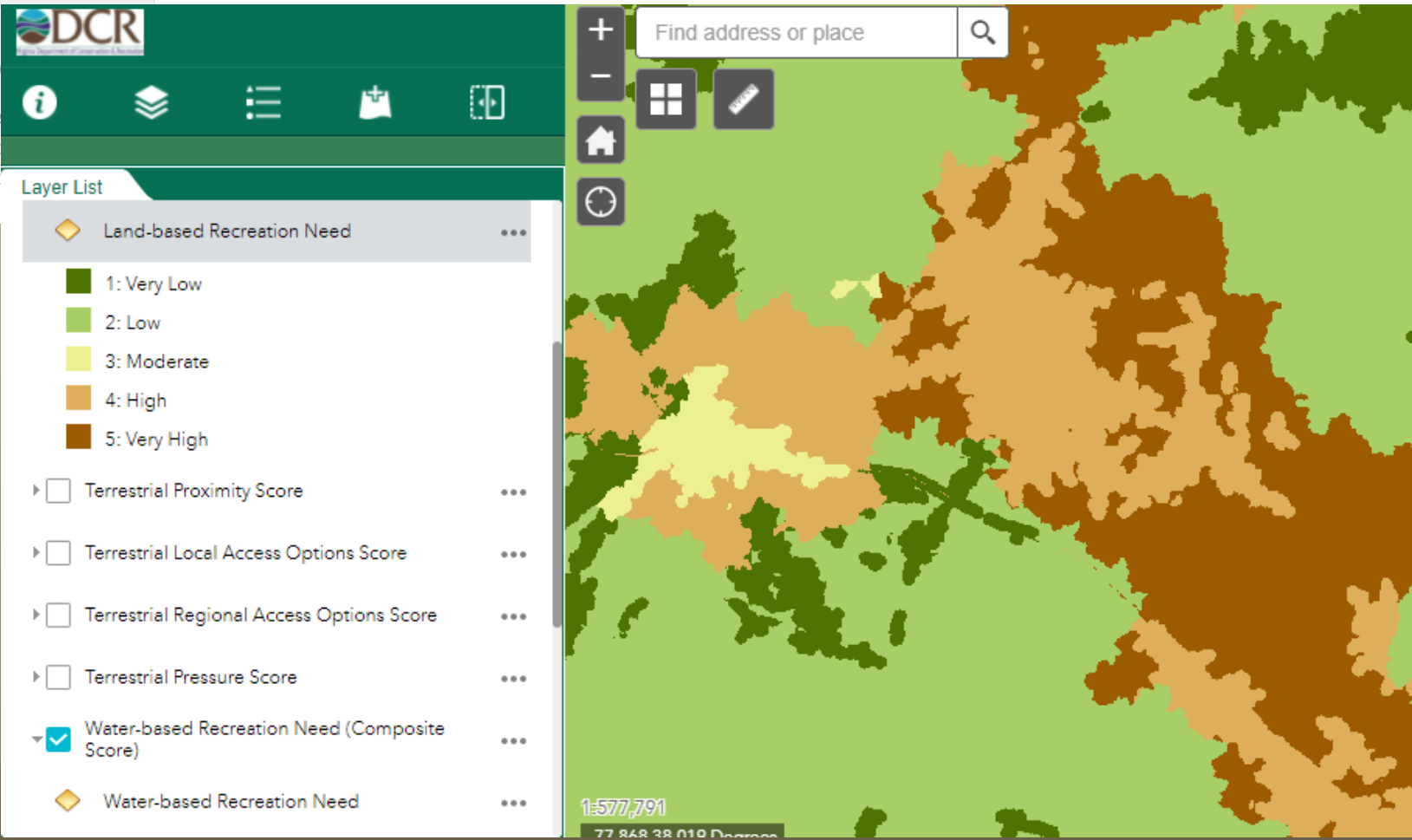
A collection of spatial layers output from a model of outdoor, nature-based recreation opportunities and needs in Virginia

Web Mapping Application by [krhazler](#)

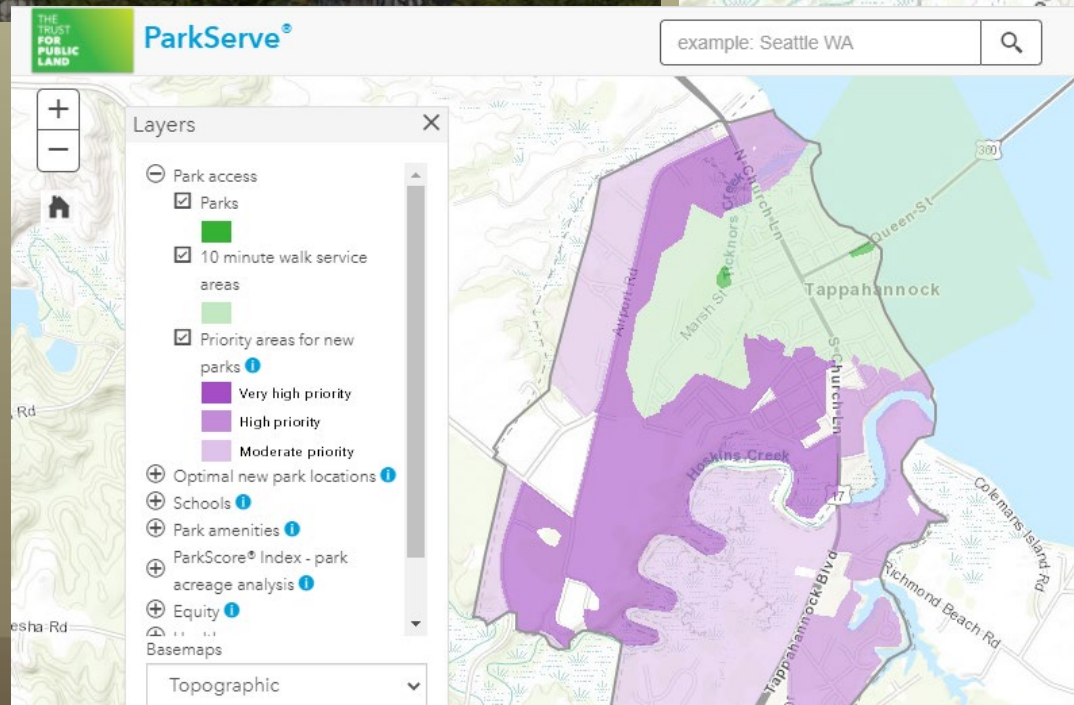
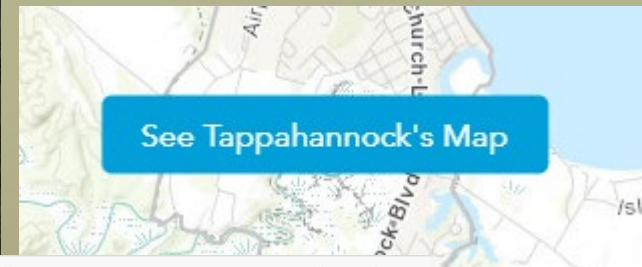
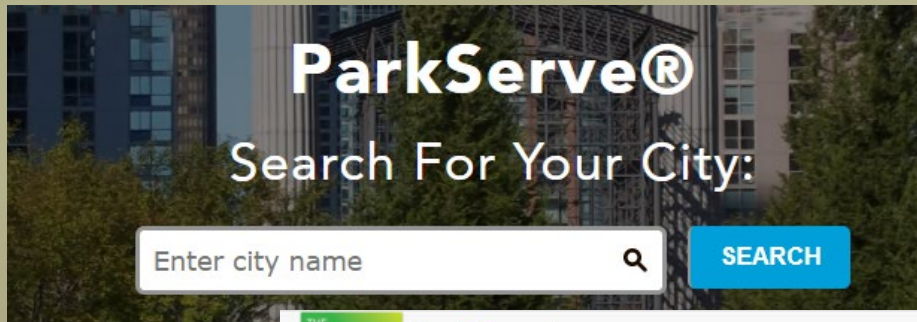
Created: May 7, 2021 Updated: Jun 15, 2021 View Count: 300

[View Application](#)

Descript
The purpo
opportunit
opportunit



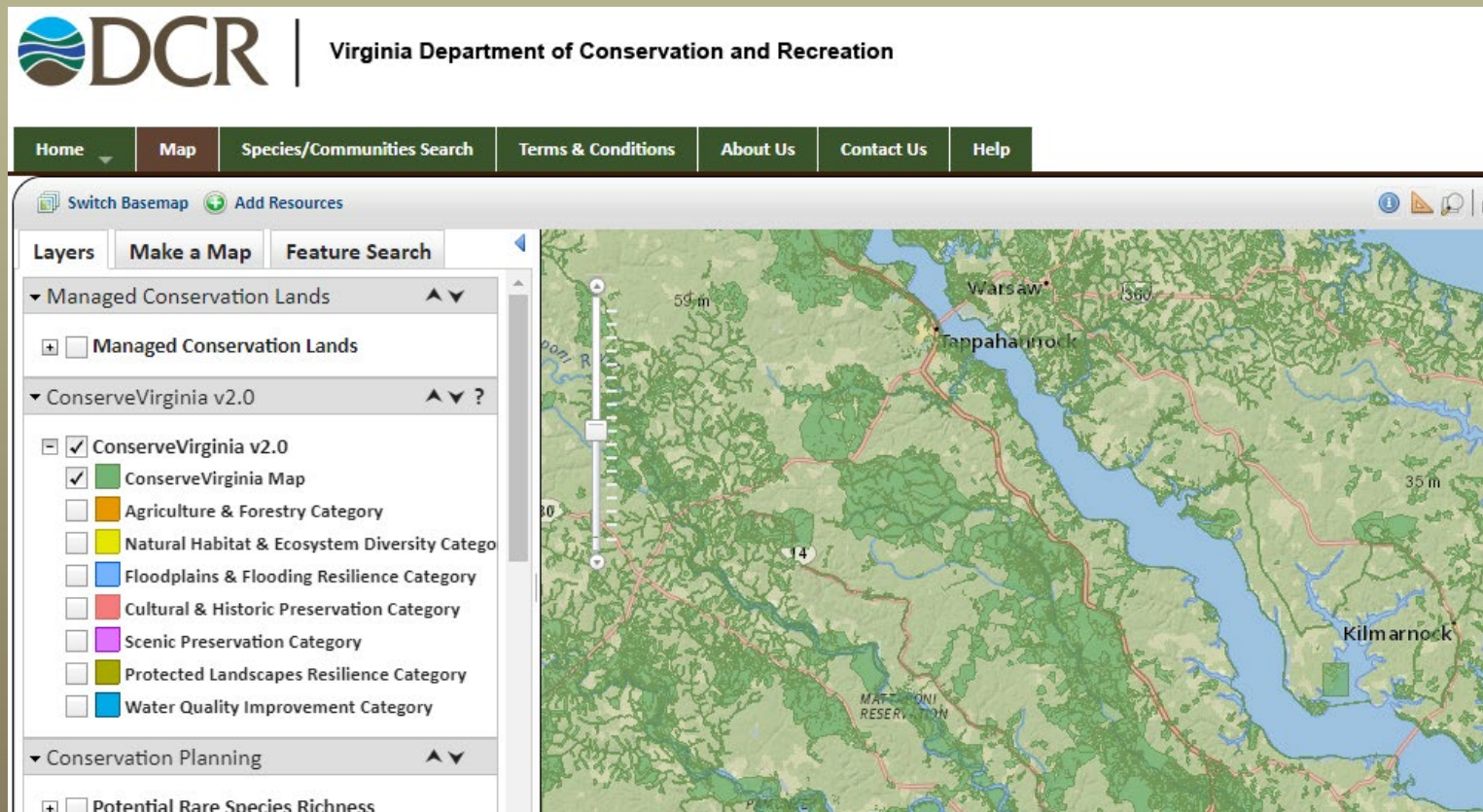
I. Land-Based.... Nature-Based **OR** ParkServe Park Need <https://www.tpl.org/parkserve>



9. ConserveVirginia

Natural Heritage Data Explorer
<https://vanhde.org/content/map>

- Property is in any category of ConserveVirginia **and** open to the public on a daily basis; percent of parcel intersecting the layer.



Max:
10 points

Federal Recreation Grants - PRR Division

<https://www.dcr.virginia.gov/recreational-planning/grants>

Email RecreationGrants@DCR.Virginia.gov

- **Land & Water Conservation Fund:**
 - National Park Service – 50/50 Match Reimbursement
 - Properties must be for **Public Outdoor Recreation** in Perpetuity
 - 2025 grant round open – applications due August 28th
- **Recreational Trails Program:**
 - Federal Highways Administration– 80/20 Match Reimbursement
 - Trail and trail amenity construction projects, including PE
 - 2025 grant round closed May 6th – next grant round anticipated to be held Spring 2026