

# Forestland Preservation Category



Amanda Scheps  
Working Lands Conservation Program Manager  
[amanda.scheps@dof.virginia.gov](mailto:amanda.scheps@dof.virginia.gov)

VLCF Grants Workshop  
June 17<sup>th</sup>, 2025

# Forestland Preservation Criteria

Criteria	Possible Points
1. Property acreage	10
2. Acres of forest	20
3. Acres that are <i>very high</i> Forest Conservation Value (FCV)	15
4. <i>New</i> : Development Vulnerability (percentage of acreage in Classes II, III, and IV)	10
5. Adjacency to conserved lands	10
6. Management of Multiple Resources	5
7. Preservation of forested acreage	10
8. Percent within ConserveVA's Ag & Forestry Category	20
Total	100

# Example Application

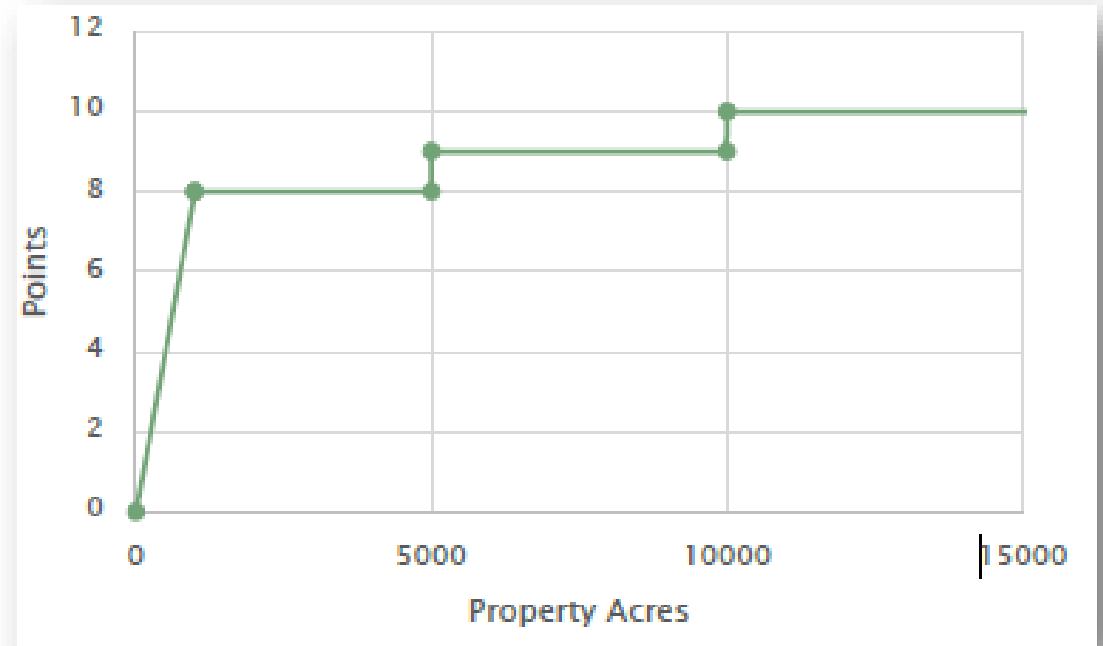
- ▶ 500-acre property
  - ▶ 450 acres forested, 400 acres of high Forest Conservation Value (FCV)
  - ▶ 63% of acreage in ConserveVirginia
- ▶ 20% of property in Class II, 10% in Class III Development Vulnerability
- ▶ ▶0.5 miles to a Wildlife Management Area
- ▶ ▶Forest Stewardship Management Plan & demonstrated implementation
- ▶ ▶Applicant willing to permanently retain 375 acres of forest land base

# 1. Property Acreage

- a. 0-999 acres = Property Acres / 1000 \* 8
- b. 1,000 -4,999 acres = 8 pts
- c. 5000-9999 acres = 9 pts
- d. >10,000 acres = 10 pts

Example property score:

►  $500 / 1000 * 8 = 4.0$  points

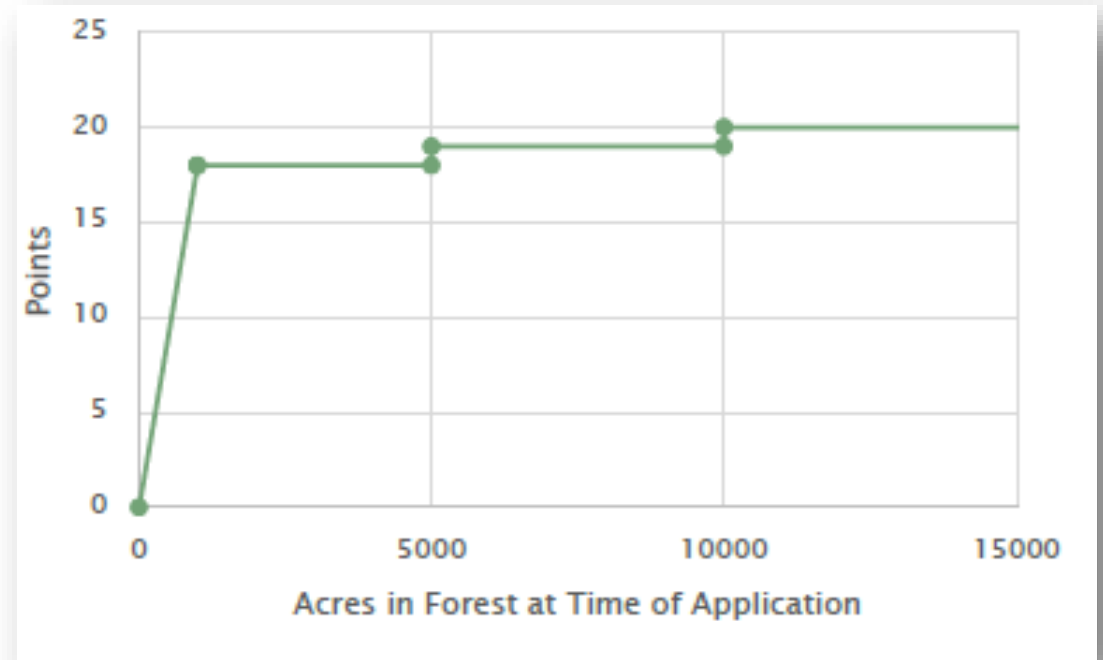


## 2. Acres of Forest

- a. 0-999 acres = Forested Acres / 1000 \* 18
- b. 1,000 – 4,999 acres = 18 pts
- c. 5000-9999 acres = 19 pts
- d. >10,000 acres = 20 pts

Example property score:

►  $450 / 1000 * 18 = 8.1$  points



### 3. Acres that are very high Forest Conservation Value (FCV)

#### Legend

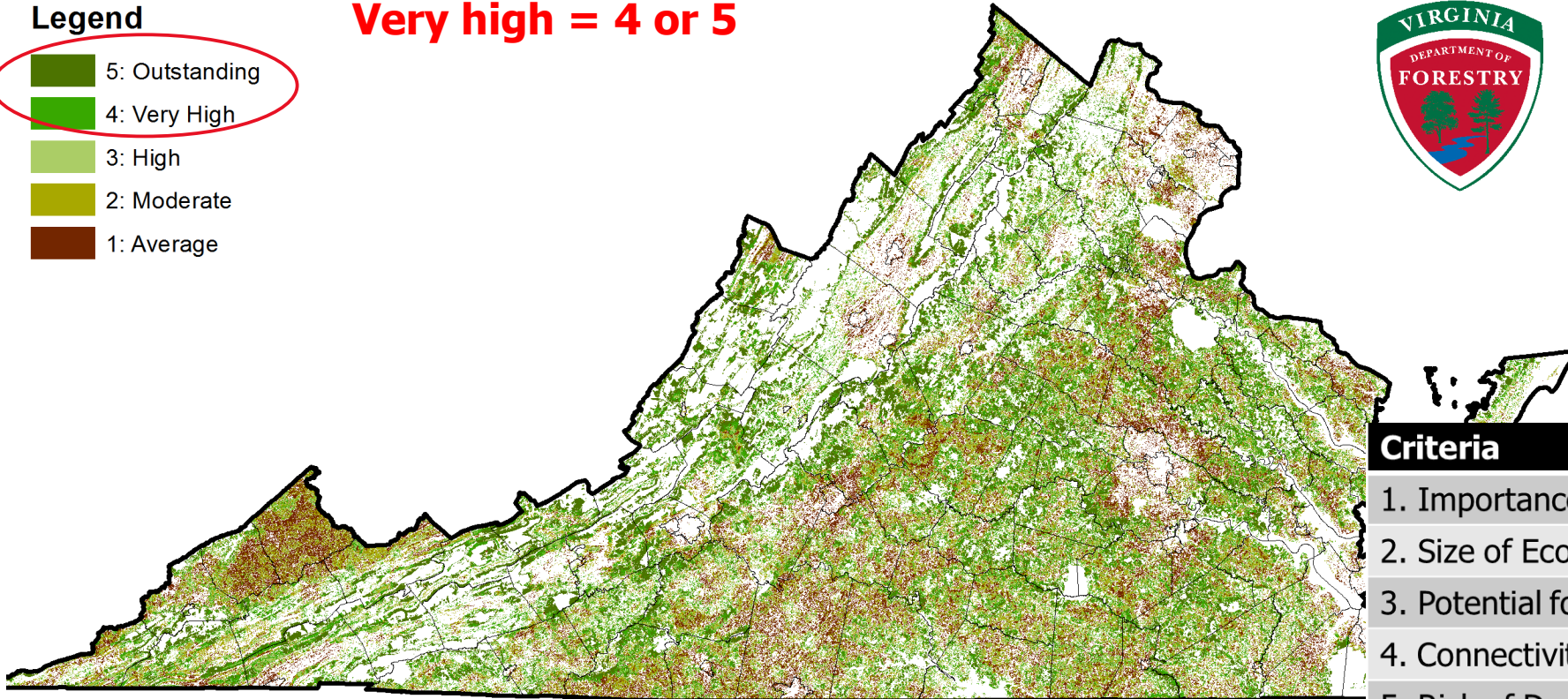
- 5: Outstanding
- 4: Very High
- 3: High
- 2: Moderate
- 1: Average

**Very high = 4 or 5**



#### Criteria

1. Importance for Water Quality
2. Size of Ecological Core
3. Potential for Timber Products Production
4. Connectivity to Existing Cons. Areas
5. Risk of Development
6. Importance for Diminished Tree & Comms

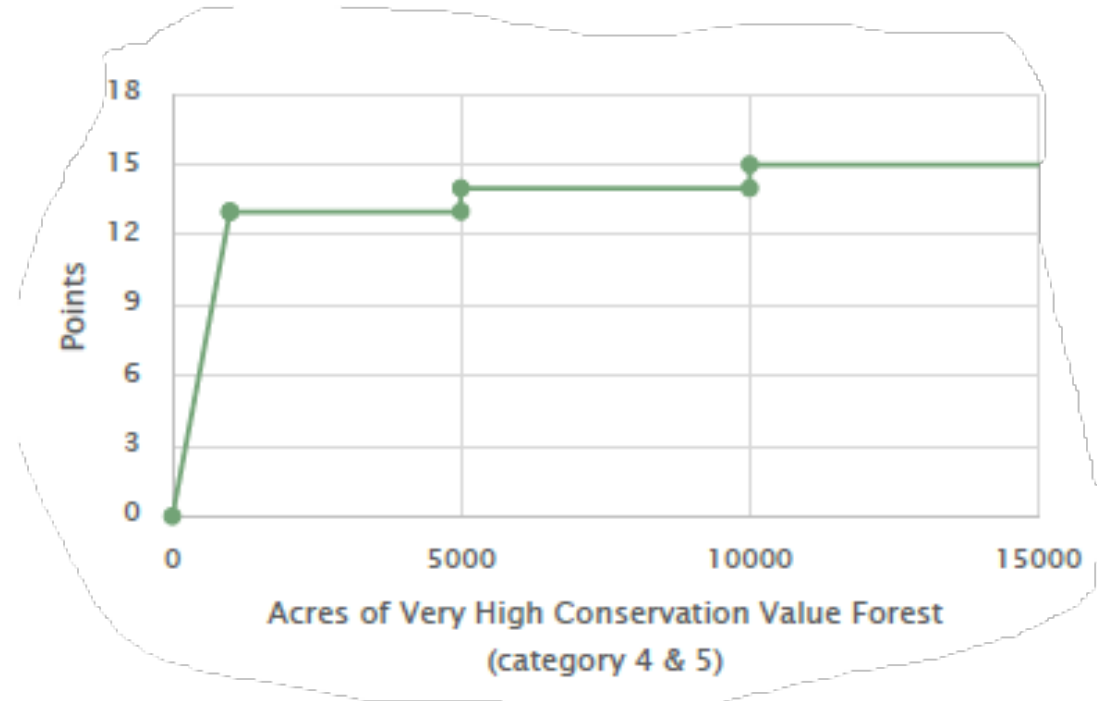


### 3. Acres that are very high Forest Conservation Value (FCV)


- a. 0-999 acres = Very High FCV Acres / 1000 \* 13
- b. 1,000 -4,999 acres = 13 pts
- c. 5000-9999 acres = 14 pts
- d. >10,000 acres = 15 pts

Example property score:

►  $400 / 1000 * 13 = 5.2$  points



# FCV on the NHDE Explorer

 Virginia Department of Conservation and Recreation

<https://vanhde.org/content/map> Login

Home Map Species/Communities Search Terms & Conditions About Us Contact Us Help

Switch Basemap Add Resources

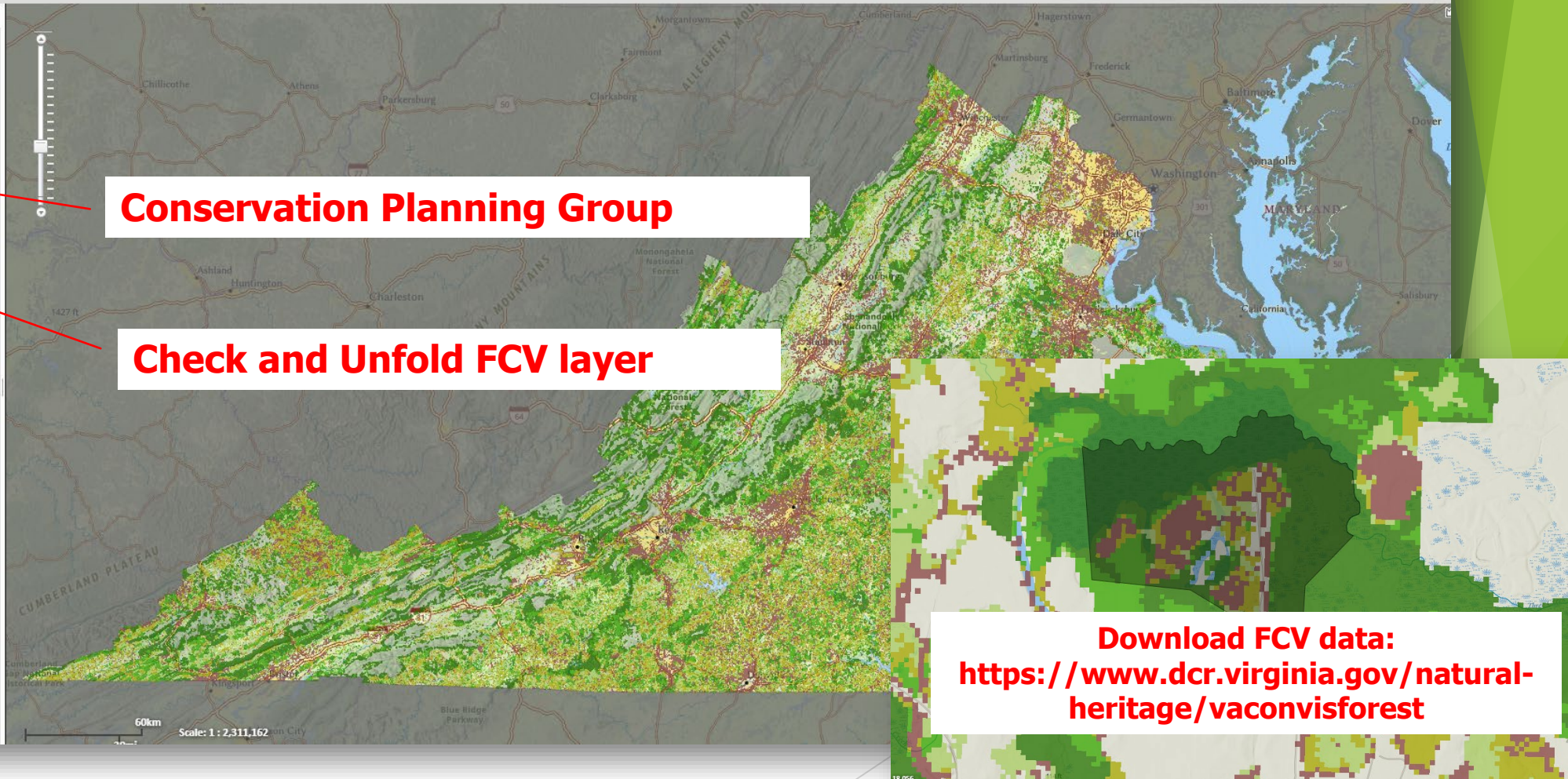
Layers Make a Map Feature Search

- Managed Conservation Lands
  - ☐ Managed Conservation Lands
- ConserveVirginia v3.0
  - ☐ ConserveVirginia v3.0
  - Conservation Planning**
    - ☐ Potential Rare Species Richness
    - ☐ Ecological Cores
    - ☐ Natural Land Network
    - ☒ **Forest Conservation Values**
      - 5: Outstanding
      - 4: Very High
      - 3: High
      - 2: Moderate
      - 1: Average
  - ☐ Watershed Impact Model
  - ☐ Nature-based Recreation Access Model
  - ☐ Cultural Resource Preservation Index
  - ☐ Agricultural Model
  - ☐ Development Vulnerability Model
- Reference Layers
  - ☐ 24K Grid
  - ☐ National Wetlands Inventory
  - ☐ Scenic Rivers
  - ☐ VDE Sinkholes
  - ☐ Streams (NHD)
  - ☐ Trails
  - ☐ USGS Placenames
  - ☐ VDOT Roads
- Boundaries
  - ☐ Counties

**Conservation Planning Group**

**Check and Unfold FCV layer**

**Download FCV data:**  
<https://www.dcr.virginia.gov/natural-heritage/vaconvisforest>

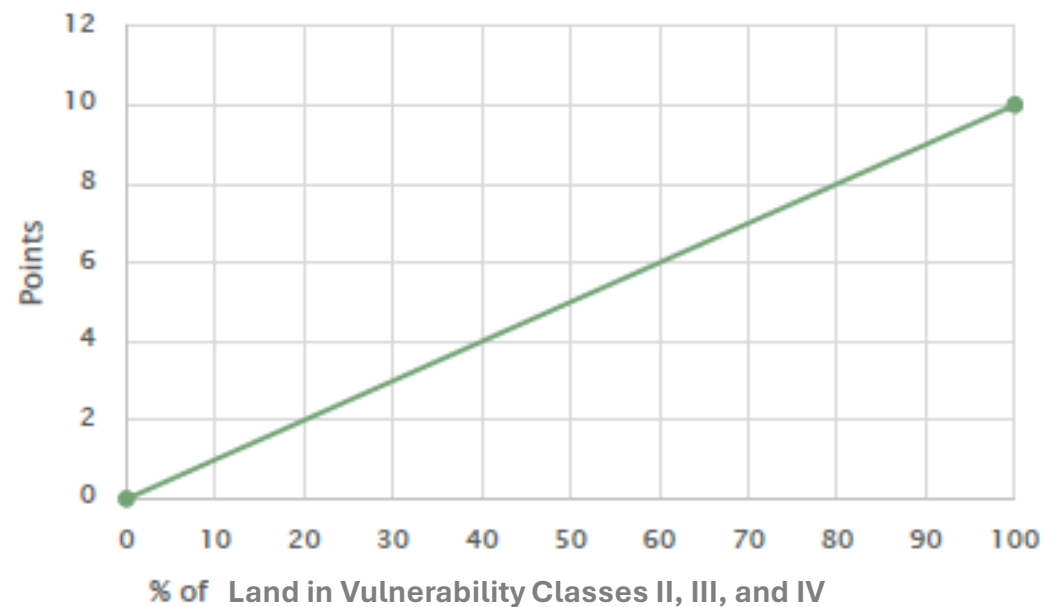


## 4. Development Vulnerability

- ▶ What is the development vulnerability rank for this parcel?
- ▶ Calculate the percentage of project land in Classes II, III, and IV.
- ▶ Points are awarded based on the combined percentages of the three categories \* 10

Example property score:

- ▶ 20% Class II, 10% Class III, 0% Class IV =  $0.2 + 0.1 + 0 = 0.3$
- ▶  $0.3 \times 10 = 3$  points



# Development Vulnerability on the NHDE Explorer



Virginia Department of Conservation and Recreation

Home Map Species/Communities Search Terms & Conditions About Us Contact Us Help

Switch Basemap Add Resources

Layers Make a Map Feature Search

Conservation Planning

- ☐ Buffers for Freshwater Mussel Habitat
- ☐ Potential Freshwater Mussel Richness
- ☐ Potential Rare Species Richness
- ☐ Ecological Cores
- ☐ Natural Land Network
- ☐ Forest Conservation Values
- ☐ Watershed Impact Model
- ☐ Nature-based Recreation Access Model
- ☐ Cultural Resource Preservation Index
- ☐ Agricultural Model
- ☒ Development Vulnerability Model

Undevelopable (-1)  
Class I (0 - 5: Least Vulnerable)  
Class II (6 - 10)  
Class III (11 - 25)  
Class IV (26 - 50)  
Class V (51 - 100: Most Vulnerable)  
Already Developed (101)

<https://vanhde.org/content/map>

Conservation Planning Group

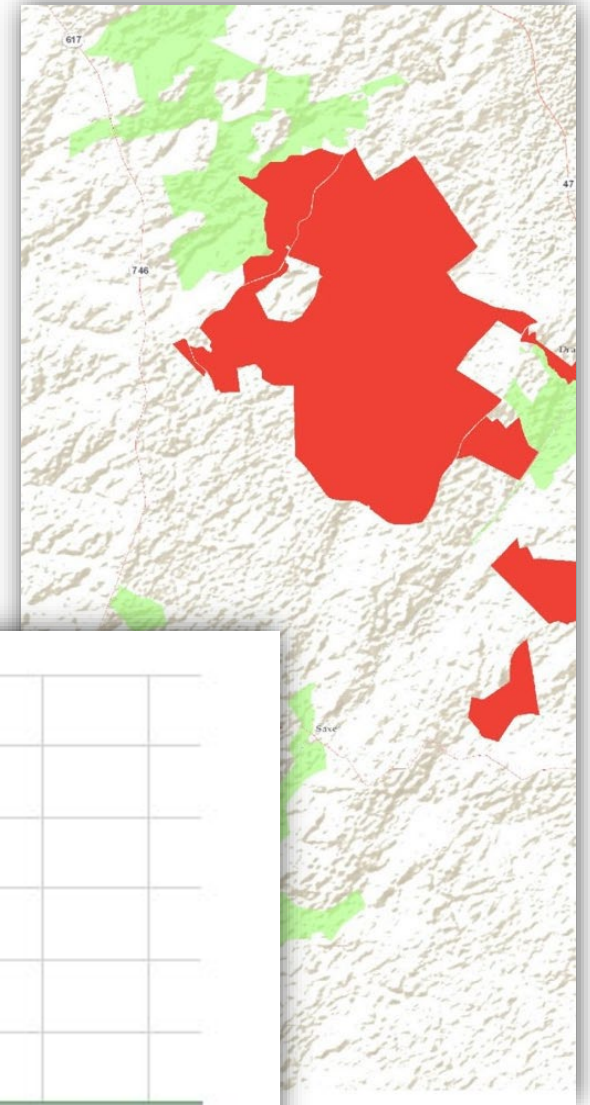
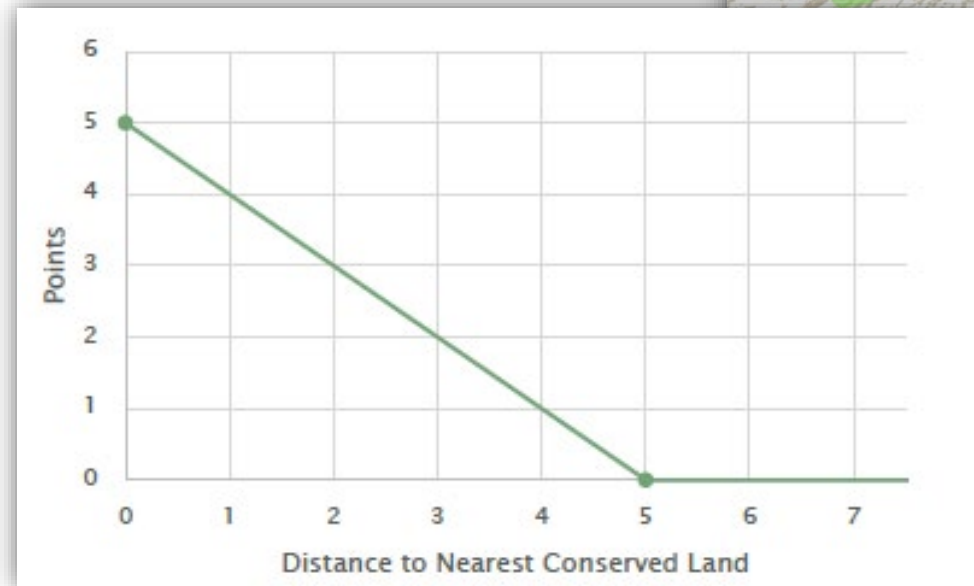
Calculate combined percentage of Classes II, III, and IV

## 5. Adjacency to Conserved Lands

- a. If  $>5$  miles = 0 points
- b. If  $< 5$  miles,  
points =  $(5 - \# \text{ miles away}) \times 2$

Example property score:

►  $(5 - 0.5 \text{ miles}) \times 2 = 9 \text{ points}$



## 6. Management of Multiple Resources

- a. Existing Plan, being implemented = 5 points
- b. Plan exists, no implementation = 3 points
- c. No plan = 0 points

Example property score:

- ▶ Plan being implemented = 5 points

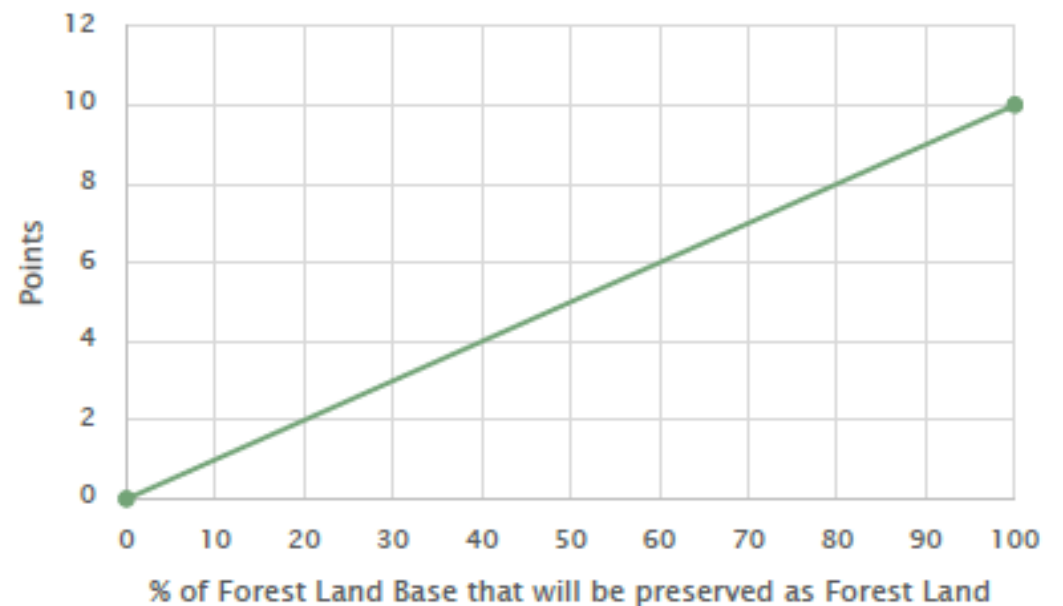


## 7. Forest Land Base Preservation

- ▶ How much forest land does the landowner commit to conserving?
- ▶ Proportion of Forest Land base that will be preserved \* 10
- ▶ Forest Land that does not currently have trees on it (e.g., harvested) but will be replanted/regenerated counts as preserved Forest Land

Example property score:

▶  $(375/450) \times 10 = 8.3$  points

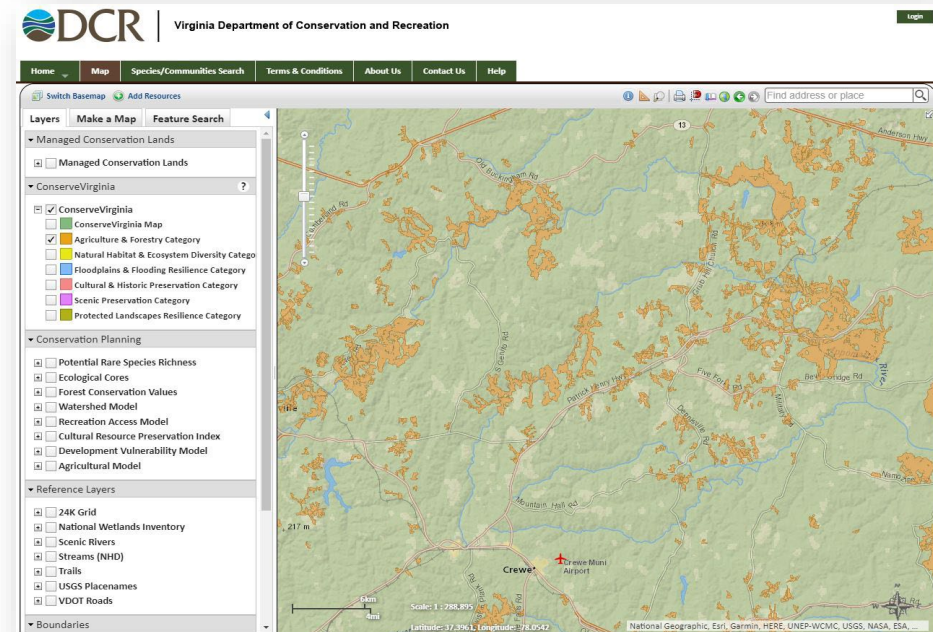
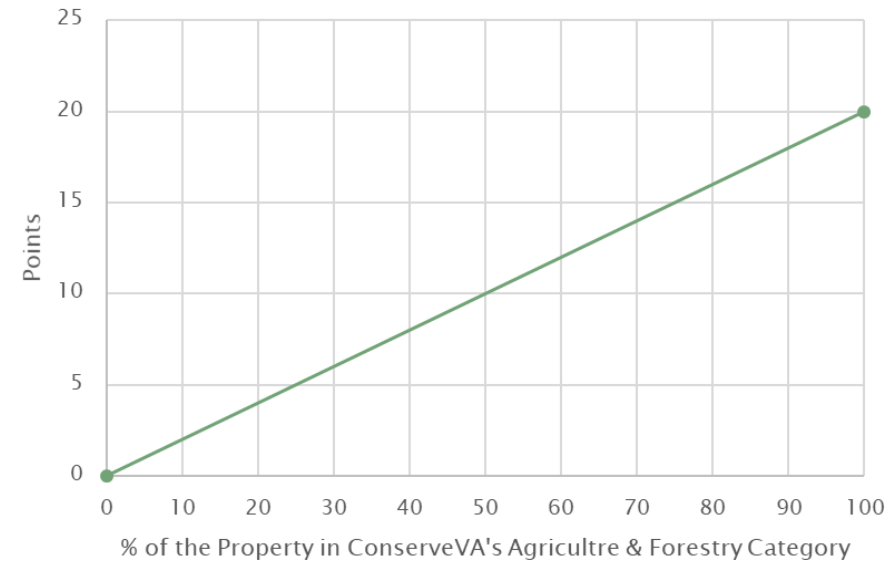


## 8. ConserveVirginia

- Proportion of the property that is in ConserveVA's Agriculture & Forestry Category \* 20

Example property score:

- $0.63 * 20 = 12.6$



# Example Results Summary

Criteria	Score	Possible Points
1. Property acreage	4.0	10
2. Acres of forest	8.1	20
3. Acres that are <i>very high</i> Forest Conservation Value (FCV)	5.2	15
4. <i>New</i> : Development Vulnerability (percentage of acreage in Classes II, III, and IV)	3	10
5. Adjacency to conserved lands	9	10
6. Forest management plan	5.0	5
7. Preservation of forested acreage	8.3	10
8. Percent within ConserveVA's Ag & Forestry Category	12.6	20
Total	55.2	100

# Suggestions

- ▶ Highly competitive category
- ▶ Run the scoring sheet and provide evidence in your application for the scoring
- ▶ If something on the layers looks wrong, tell us and demonstrate it
- ▶ Secondary category designations
- ▶ Complete application-respond to all criteria and questions



# Questions:

Amanda Scheps

Working Lands Conservation Program  
Manager

[amanda.scheps@dof.virginia.gov](mailto:amanda.scheps@dof.virginia.gov)

434-987-7102

Website: <http://www.dof.virginia.gov>